

Sock Boot Soft Strap Fitting Instructions

• How to suit up you dog with the socks and Straps

- ◆ Firstly, the socks and straps should be fitted before putting on any other apparel or harnesses. This is recommended so that you dog doesn't overheat before getting out the door
- ◆ When putting on the sock boots and straps, its best to have your dog laying down on their side or back with their legs free and unencumbered. The standing position is usually the most difficult and will most likely produce the largest active circumference which could result in a loose fit and potentially a lost strap.

◆ Storage and handling of the Straps and Sock boots

- Store the straps at an ambient temperature between 20-30 celcius
- Avoid excessive elongation at temperatures colder than the recommended storage temperature
- Avoid chaffing the band cog holes when removing the straps from your pets legs. This will result in excessive wear and premature band failure.
 - ✦ To avoid chaffing, apply light tension to the strap when removing it. The light tension will elongate the cog hole allowing the band to be slipped over the Clasp Pin head without chaffing the band.
- Rinse the straps to remove any debris or dirt that accumulated during use
- Rinse the rubberized base of the Sock Boot to remove any debris or dirt that accumulated during use. Be careful not to soak the sock material while rinsing.
- Dry the Sock boot by placing them near a warm airflow to prepare for next use.

◆ When fitting the sock, it is recommended to:

- Put your fore or index fingers into the mouth of the sock to stretch open wide enough to fit the non load bearing foot.
- Carefully work the sock up the leg towards the front Carpus and back Tarsis (knee joints) making sure the sock knit doesn't catch the toe nails or the dewclaws
- Once the sock is fully fitted, remove your fingers and ensure that the boot is fit properly to the foot, toe nails, and the dewclaw is in a normal and relaxed position

◆ Now fit the Sock Boot Soft Strap as follows:

- Hold the strap normal (90 degrees) to the outstep of the leg with the dimple pad against the leg and the strap band pointing to the back.
- Wrap the soft band around the back continuing around the instep of the leg towards the front of the leg
- Without stretching the band, line up the cog hole that loosely aligns to the cog clasp post.
- **To adequately tension the band, stretch to the next cog hole position. DO NOT OVER TIGHTEN THE BAND**
 - ✦ The dimple pad built into the band is designed to grip the sock weave; therefore, does not require a tight strap to secure the sock from slipping.

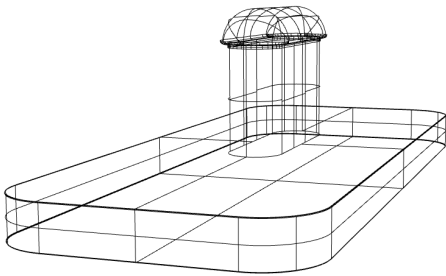
◆ To remove the straps from your pet's legs:

- Have your dog in a normal standing position
- Apply a light tension to the band (as you did when fitting the strap) to elongate the cog hole allowing the band to be slipped over the Clasp Pin head without chaffing the band.
 - ⇒ **CAUTION: a cold Soft Strap will exhibit restricted elongation resulting in stiffness. Cup the band in your hand to warm it prior to attempting to remove from the pet's leg**
- Remove the strap from the leg
- Remove the sock boot from the foot.

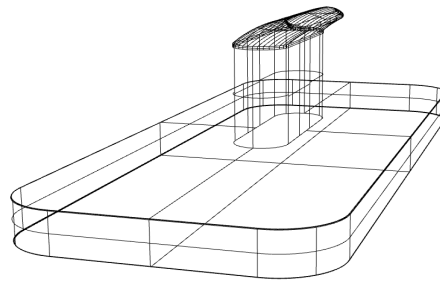
Clasp Pin Sub-Assembly Installation Instructions

How to Install the Clasp Pin subassembly into the Soft Strap

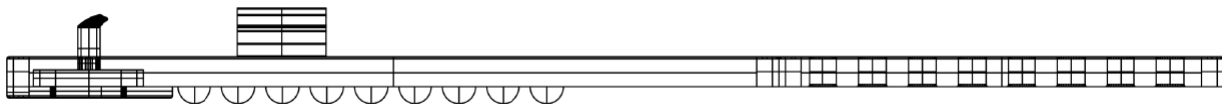
- ♦ The Clasp Pin is effectively the belt buckle for the Sock Boot Soft Strap. An actual buckle could have been implemented, but I believe you'll find that the Clasp Pin is a much simpler device, much more expedient to operate, and very effective in retaining the strap while in use
- ♦ Take note which Clasp Pin type you are installing. The two types look like this:



Non Polarized-will grip the band cog hole in either direction



Polarized-the curved top must be pointing away from the band insertion direction as shown below

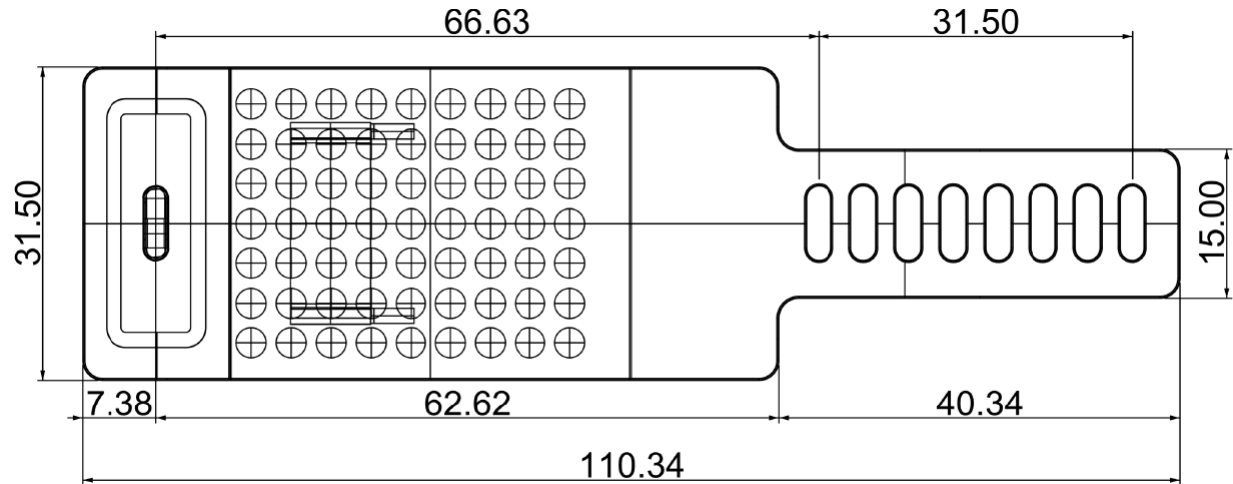


♦ To install the Clasp pin subassembly, follow the steps below:

- Locate the Clasp cavity at the large end of the strap on the inside surface next to the novel dimple pad. In the center of the cavity sight the cog hole cut-out on the top surface.
- Insert the Clasp Pin post into the cog hole cut-out (heed the Clasp type from the two above pics). It is intentionally a snug fit. You'll need to lightly stretch the rubber to pop it in place.
 - ✦ Note that the Clasp Pin cavity is shrouded by a 1 mm lip all around the perimeter of the Clasp Pin base. This is what holds the Clasp pin in place. Proceed with caution on the next step to ensure the Clasp Pin base is not overstressed as it is intentionally kept thin to maintain optimal strap dimensions.
- Grasp the strap in one hand and pinch the Clasp pin base with your thumb to contact the strap band. With your other hand, pinch the rubber strap at the base of the band along the long side of the Clasp pin base. Roll the rubber away from the Clasp pin edge stretching the shroud. This will open the mouth of the shroud enough to gently insert the Clasp Pin base. Working your way around the circumference of the Clasp base you will be able to tuck the clasp base into the cavity. Once you have achieved an engagement, it becomes easier to work your way around the entire Clasp Pin base.

Sock Boot Soft Strap Dimensions and Sizing

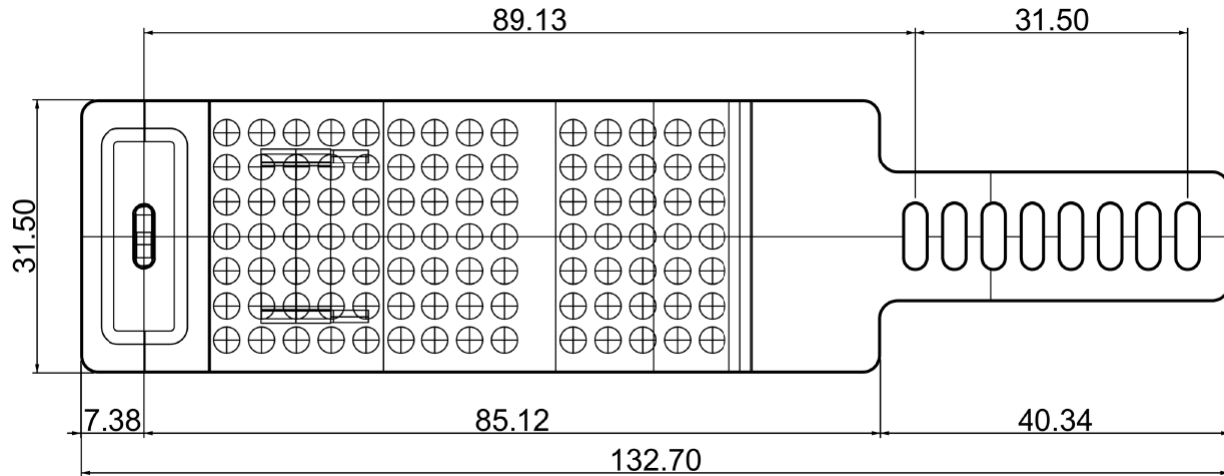
XS-S



ATTRIBUTE	ITEM	DIMENSION (mm)	DESCRIPTION	IMPORTANCE
Minimum fit length	STRAP	66.63	LINEAR LENGTH	
Maximum fit length	STRAP	98.13	LINEAR LENGTH	$66.63 + 31.5 = 98.13$
Strap Body Width	STRAP	31.5	LINEAR LENGTH	Must be less than the length between the top of the foot to the knee
Strap Thickness	STRAP	3.68 -11.56	MAX. THICKNESS FIT ADJUSTMENT	Adjustment to functional circumference fit $-3.68 * 2 * \text{Pi} * \text{Sin}(30) = -11.56106096521044$
Sock Wall Thickness	SOCK BOOT	~1 -6.28	SOCK WALL FIT ADJUSTMENT	Adjustment to functional circumference fit $-1 * 2 * \text{Pi} = -6.283185307179586$
Minimum fit circumference	DOG LEG	48.79	CIRCUMFERENCE	Final fit Gauge $66.63 - 11.56 - 6.28 = 48.79$
Maximum fit circumference	DOG LEG	80.29	CIRCUMFERENCE	Final fit Gauge $98.13 - 11.56 - 6.28 = 80.29$

Sock Boot Soft Strap Dimensions and Sizing

M-L



ATTRIBUTE	ITEM	DIMENSION (mm)	DESCRIPTION	IMPORTANCE
Minimum fit length	STRAP	89.13	LINEAR LENGTH	
Maximum fit length	STRAP	120.63	LINEAR LENGTH	
Strap Body Width	STRAP	31.5	LINEAR LENGTH	
Strap Thickness	STRAP	3.68 -11.56	MAX. THICKNESS FIT ADJUSTMENT	Adjustment to functional circumference fit $-3.68 * 2 * \pi * \sin(30) = -11.56106096521044$
Sock Wall Thick- ness	SOCK BOOT	~1 -6.28	SOCK WALL FIT ADJUSTMENT	Adjustment to functional circumference fit $-1 * 2 * \pi = -6.283185307179586$
Minimum fit cir- cumference	DOG LEG	71.29	CIRCUMFER- ENCE	Final Fit Guage $89.13 - 11.56 - 6.28 = 71.29$
Maximum fit cir- cumference	DOG LEG	102.79	CIRCUMFER- ENCE	Final Fit Guage $89.13 + 31.5 - 11.56 - 6.28 = 102.79$